

Now more than ever, we cannot allow this public health crisis to become a generational education crisis.

This is the moment to reimagine schools for the future and create the schools and learning opportunities families want and need.

What are school actions?

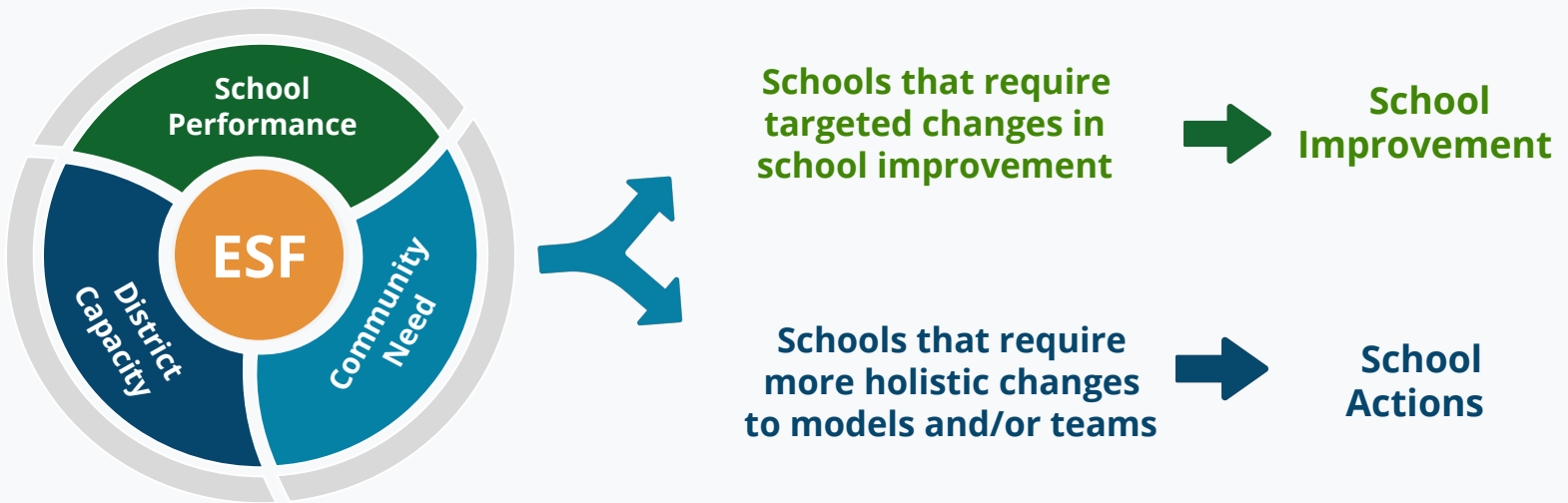
School actions are **bold strategies** districts can take to **create, redesign, or restart** schools that meet the unique needs of their community using models aligned with the **Effective Schools Framework (ESF)**, including the use of **high-quality instructional materials**.



Are school actions right for your schools?

Conduct annual analysis of school performance and community need

Match community and student needs to the right pathway



**Districts should analyze school performance, district capacity, and community need against the Effective Schools Framework to determine the path to take with each campus*

Why choose school actions?



High Quality Schools: Families want and deserve world class learning opportunities that meet their needs.



Resources: Investment to fund a one-year planning process and two-year continuation grant.



Intensive Support: Customized technical assistance

School Action Types and Requirements

All school actions are ESF-aligned, including high-quality instructional materials

- 

Redesign Schools Support a school leader to develop and implement an inspiring blended learning school model that is ESF-aligned, including high-quality instructional materials.
- 

Restart Struggling Schools Transform an existing school with new teams to implement a rigorous ESF-aligned turnaround model, including high-quality instructional materials, with a proven partner or as the district.
- 

Create New Schools Create a new school option designed to fill a gap in the community that is ESF-aligned, including high-quality instructional materials.
- 

Reassign to Higher Performing Schools Transition students into higher quality schools, ensuring students are supported.

School Action Type	Managed by	Leadership & Staff	School Model	Students
Redesign School	District's board	Same	New: Blended Learning	Same
Restart: Partner Managed	Partner's board	New	New	Same
Restart: ACE Model	District's board	New	New: ACE	Same
New School: District Managed	District's board	New	New: District Designed	Mostly New
New School: Partner Managed	Partner's board	New	New	Mostly New
New School: SEN Middle School	District's board	New	New: SEN	Mostly New
Reassign to Higher Performing Schools	District's board	N/A	N/A	Transition

School Action Type	Key Requirements
<p>Redesign School</p>	<ul style="list-style-type: none"> • Participate in school redesign process facilitated by technical assistance provider • ESF-aligned school model, including high-quality instructional materials, that is reviewed and approved by TEA • Extended day or year • Must accommodate student learning in multiple settings, including a combination of campus-based instruction and remote, distance learning (synchronously and asynchronously)
<p>Restart: Partner Managed</p> <p>Restart: ACE Model</p>	<ul style="list-style-type: none"> • Rigorous district authorization process • Partner model is ESF-aligned, including high-quality instructional materials • Partner organization has track record of success • Partnership meets eligibility requirements for 1882 benefits • Adopt all five core elements of ACE model • Release time for school leader planning • ESF-aligned school model, including high-quality instructional materials, that is reviewed and approved by TEA • Extended school day or year
<p>New School: District Managed</p>	<ul style="list-style-type: none"> • Participate in new school design process facilitated by TA provider • Release time for school leader planning • Partner model is ESF-aligned, including high-quality instructional materials • Extended day or year
<p>New School: Partner Managed</p>	<ul style="list-style-type: none"> • Rigorous district authorization process • Partner model is ESF-aligned, including high-quality instructional materials • Partnership meets eligibility requirements for 1882 benefits • New school can grow one grade at a time, year over year over or may open with all grade levels in a new facility
<p>New School: SEN Middle School</p>	<ul style="list-style-type: none"> • Implement all aspects of the SEN HS model including an innovative team teaching model and a new schedule with extended learning. • Utilize ESF-aligned high-quality instructional materials provided by School Empowerment Network (SEN), with SEN's support. • Release time for school leader planning and SEN training program • School opens with 6th grade and grows to serve grades 6-8 by year 3
<p>Reassign to Higher Performing Schools</p>	<ul style="list-style-type: none"> • District provides options and transition decision supports for students and families • District provides additional resources for receiving school(s) to support students

School Action Funding Opportunities

Districts have access to **multiple funding opportunities from TEA** which can be combined to fund school actions. If your district is not eligible for these grants, **you can still implement a school action.**

- School Action Fund Grants** provide planning and implementation funds and technical assistance for districts to take school actions to transform schools or create new schools.
- Other Grants and Resources** support the adoption of specific school models (e.g. Early College) which can be used to implement strong school actions, or provide additional funding for partner-managed schools.

Grant	Description	Eligibility	\$ Available
School Action Fund Grant			
School Action Fund Grant	Districts receive funding to plan school actions over one year. Upon meeting planning goals districts receive continuation funding over two years.	Districts with Comprehensive Campuses or Targeted D/F Campuses.	Planing: \$250,000 Continuation: Up to \$1 million
Other Grants and Resources			
Grants for Specific Program Models	Districts receive grants to implement specific models such as P-Tech, T-STEM, and Early College HS.	District eligibility varies by program. See this funding matrix for more information.	Varies, many grants ~\$150,000
1882 Funding/Texas Partnerships	Districts receive additional per pupil funding to open a new school managed by a partner they select.	Districts who recruit and contract with a partner org to manage a school are eligible.	Additional per pupil funding .
Charter School Program (CSP) Grants	District partners receive funding for the start-up of a new charter school over 3 years.	Districts are not eligible, but can support applications from their partners for new schools.	\$600,000 average award